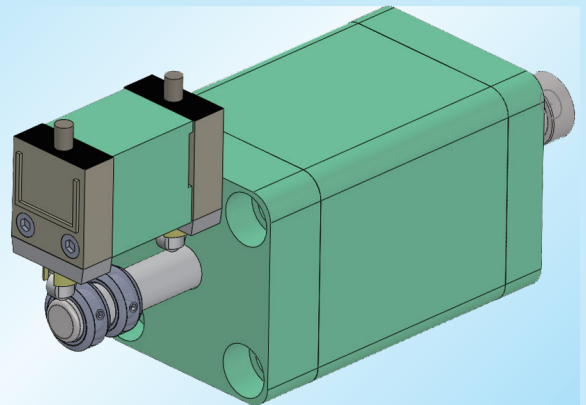


LS DEVICES

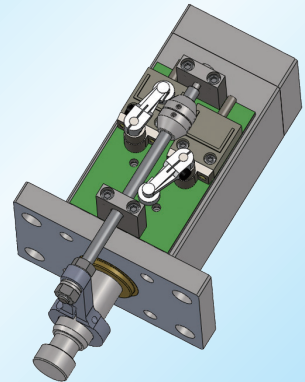
ULS

It is not necessary for big digging into mold by installing LS on the cylinder surface of the end of the side of the head. It is effective way when the cylinder in the tunnel part on use. (Supporting in 100st)



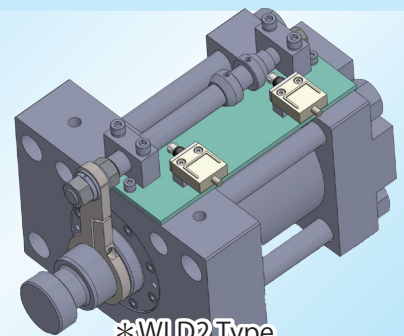
CLS

This is waterproof high LS which thought much of the compactness. It designed to minimize projected part from the cylinder. The mounting dimension has compatibility with MS. (Supporting up to 60st, it will be separately review more stroke.)



OLS

It provide the slide bar, guide bar of HLS in MLS, and it improves stiffness and the limit switch is using a waterproof type same as MLS. It is cheaper than HLS.



*WLD2 Type
It is also available with WLD2,
the connecting box, too.

LS Only for backward limit

For squeeze cylinder where there is not enough space,
it is effective when detecting backward limit.
It's quite low price because attaching limit switch only.

